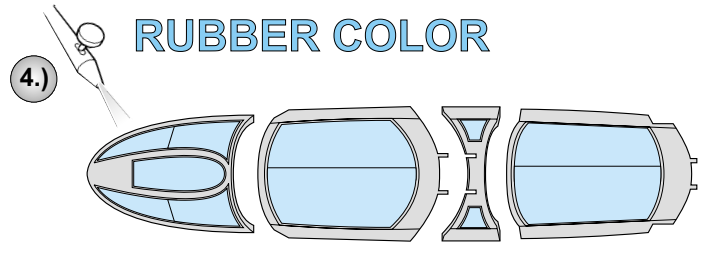
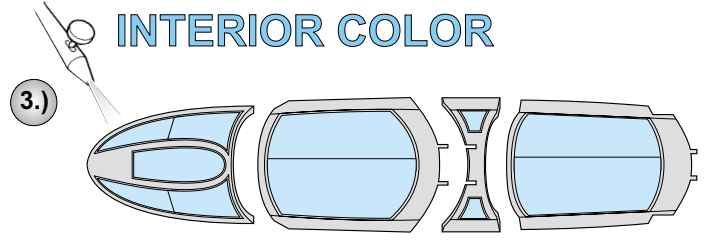
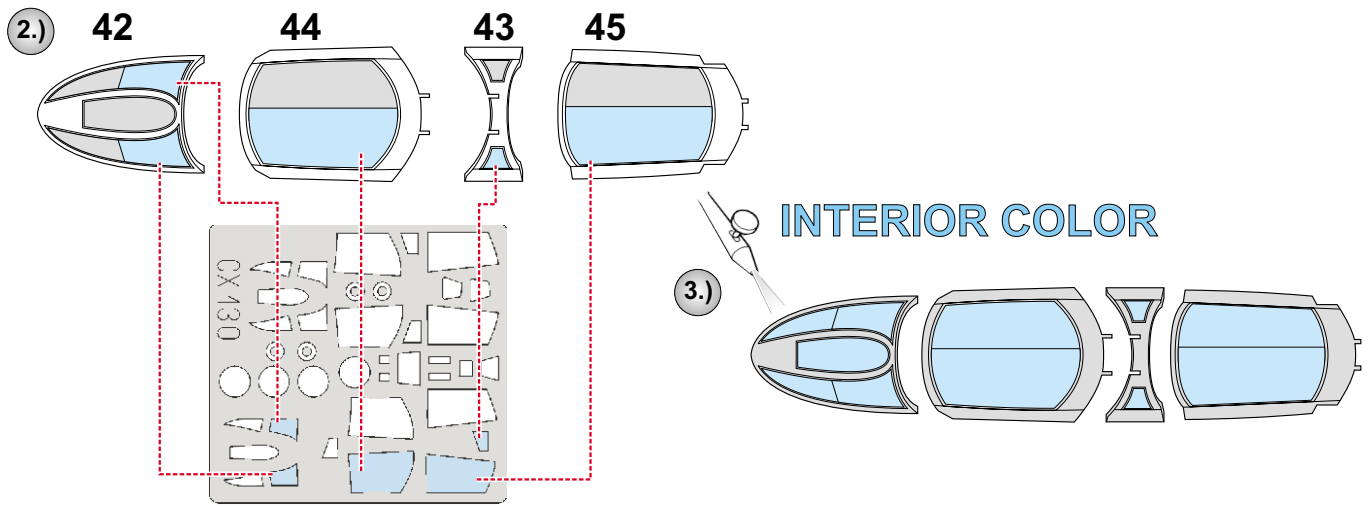
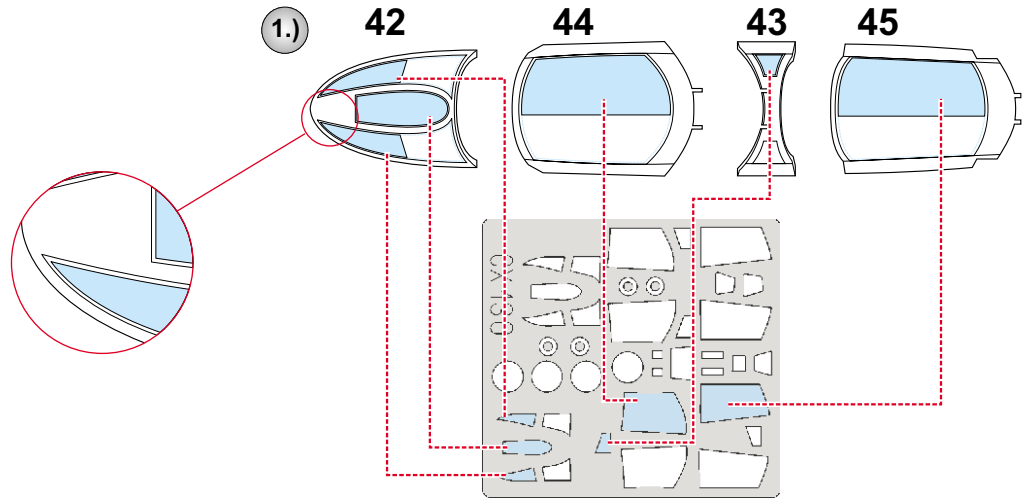
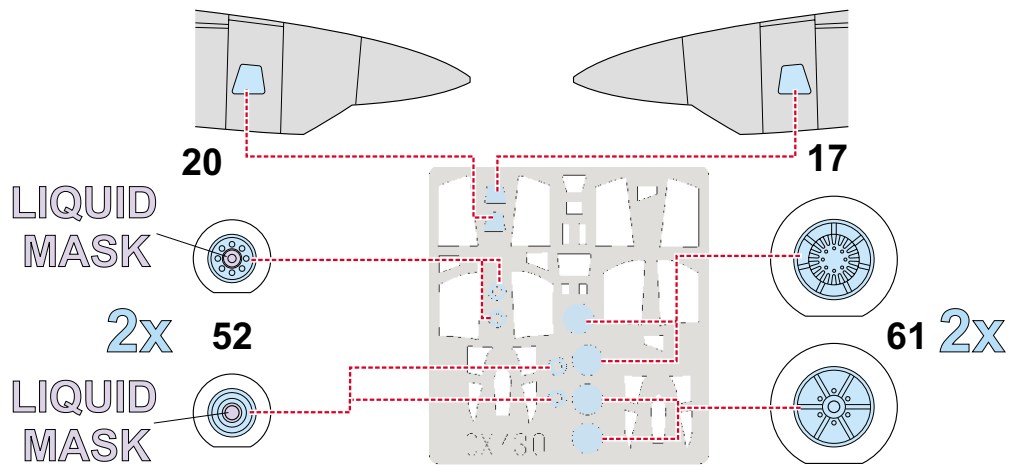
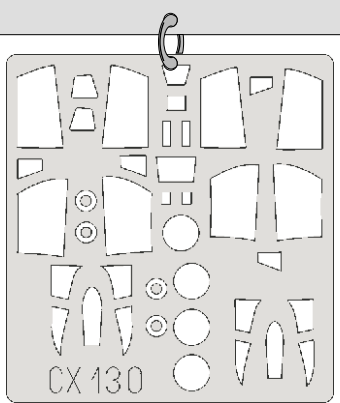


eduard  
MASK

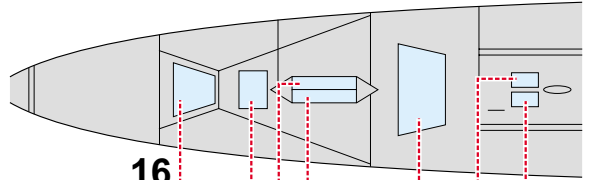
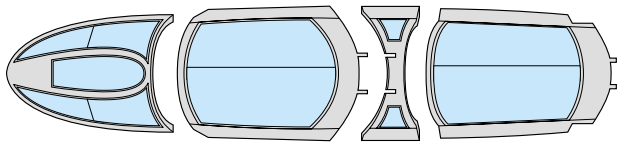
# F-4E/RF-4 Phantom II 1/72

The die-cut mask for accurate canopy frame painting of the  
*Revell*  
scale 1/72 KIT

CX 130

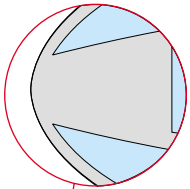
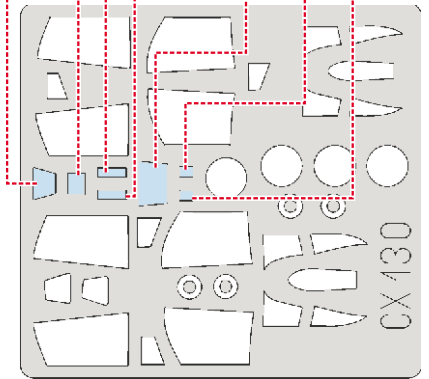


### 5.) REMOVE MASK



16

54A



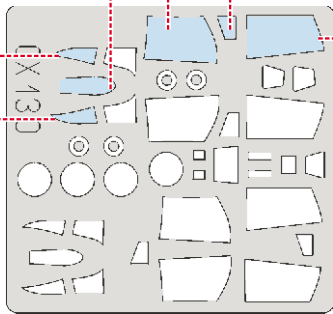
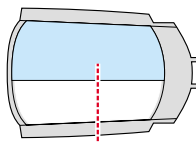
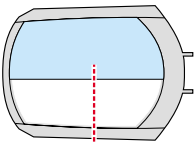
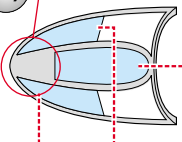
6.)

42

44

43

45



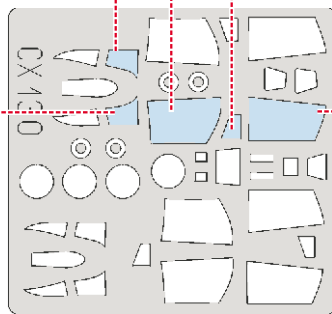
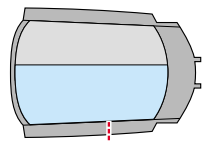
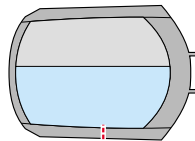
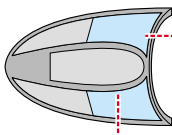
7.)

42

44

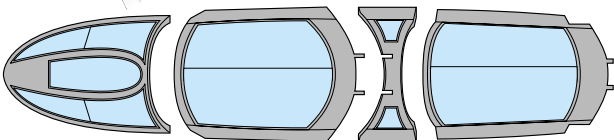
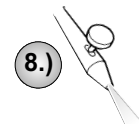
43

45



8.)

### CAMOUFLAGE COLOR



**REFERENCES:** Sqadron/Signal Publ. # 1065 - F-4 PHANTOM II  
Verlinden Publ.: LOCK ON #8 - F-4E PHANTOM II  
Replic #53 / janvier 1996  
Replic #57 / mai 1996